

**MOPTIONAL ATERIALS LEGEND**

	UNITS	PLAN QUANTITY	PERMIT QUANTITY (FILL IN)
<b>VEHICULAR PAVING</b>			
CONCRETE	SF	450	
<b>PEDESTRIAN PAVING</b>			
AGGREGATE PAVING, CHOOSE FROM DETAILS 1-6 ON SHEET L3.0	SF	332	
MULCH SEE DETAIL 5 ON SHEET L3.2	SF		
<b>STORM WATER ELEMENTS (OPTIONAL)</b>			
SWALE/CASCADE: COBBLE & TRINITY GRAVEL WITH PLANTINGS SEE DETAILS #8 & 9 ON SHEET L3.1	LF	43	
RAIN GARDEN: 3/8" GRAVEL MULCH OR PEA GRAVEL, SEE DETAIL 3 ON SHEET L3.1	SF	40	
STORM DRAINAGE ACROSS/UNDER PATH, SEE DETAIL 5-7 ON SHEET L3.1	EA	1	
STORM DRAIN PIPE SEE DETAIL 2 ON SHEET L3.1	LF	12	

\*SEE SHEETS L3.0-3.2 FOR MATERIALS OPTIONS  
**PLANTING LEGEND**

AREA	BOTANICAL NAME	SIZE	SPACING	PLAN QUANTITY	PERMIT QUANTITY (FILL IN)
------	----------------	------	---------	---------------	---------------------------

**PLANTING LOW WATER USE**

	LARGE TREE QUERCUS TOMENTELLA (ISLAND OAK)	15G	20'-50' O.C.	1	
	MEDIUM TREE NYSSA SYLVATICA (TUPELO)	15G	20'-50' O.C.	2	
	GROUNDCOVER SATUREJA DOUGLASII (YERBA BUENA)	4"	18" O.C.	18	

**GRASSES/SEDGES/RUSHES**

	FESTUCA CALIFORNICA, SEED WILDFLOWERS: POPPIES BABY BLUE EYES COLLINSIA	2"	30" O.C.	120	
	FESTUCA IDAHOENSIS 'STONY CREEK' (IDAHO FESCUE)	4"	18" O.C.	9	
	CAREX TUMULICOLA (FOOTHILL SEDGE)	4"	2' O.C.	24	

**PERENNIALS 0-2' SUN**

	EPILOBIUM SEPTENTRIONALE 'WAYNE'S SILVER' (CALIFORNIA FUCHSIA)	4"	3' O.C.	11	
--	--	----	---------	----	--

**PERENNIALS 2-4' SUN**

	ACHILLEA MILLEFOLIUM (YARROW) 'CALISTOGA' OR 'A. FILIPENDULA'	4"	3' O.C.	9	
	ACHILLEA TOMENTOSA (WOOLY YARROW)	4"	3' O.C.	4	
	ASCLEPIAS SPECIOSA (SHOWY MILKWEED)	4"	4' O.C.	3	

**SHRUBS 1-3' SUN**

	ARCTOSTAPHYLOS 'JOHN DOURLEY' (MANZANITA)	1G	4' O.C.	5	
	MONARDELLA VILLOSA	4"	3' O.C.	8	

**SHRUBS 3-6' SUN**

	CEANOTHUS 'CONCHA' (CALIFORNIA LILAC)	1G	6' O.C.	3	
	SALVIA 'HOT LIPS' (HOT LIPS SAGE)	1G	4' O.C.	4	

**VINE PLANTING**

	ARISTOLOCHIA CALIFORNICA (CALIFORNIA PIPEVINE)	1G		1	
--	--	----	--	---	--

**PLANTING MEDIUM WATER USE**

	PARK STRIP - RAIN GARDEN (OPTIONAL) BOTTOM PERIMETER OF RAIN GARDEN				
	RED FESCUE (NATIVE)	2"	16" O.C.	142 SF	
	SOLIDAGO CANADENSIS (CANADA GOLDENROD)	4"	18" O.C.	3	
	JUNCUS EFFUSUS 'CARMAN'S JAPAN' (CARMAN'S SACRED JAPANESE RUSH)	4"	3' O.C.	10	
	ASTER CHILENSIS 'POINT SAINT GEORGE' (DWARF CALIFORNIA ASTER)	4"	3' O.C.	3	

\*SEE MASTER PLANT LIST FOR PLANT SUBSTITUTIONS AND SHADE ALTERNATES, AVAILABLE FROM SONOMA-MARIN SAVING WATER PARTNERSHIP <http://www.savingwaterpartnership.org>.

**PLANTING NOTES:**  
1. REFER TO PLANTING DETAILS ON SHEET L3.2.

**APPLICANT INSTRUCTIONS:**

- MEASURE ENTIRE FRONT YARD AREA. SUBTRACT HARDSCAPE AREAS TO GET THE TOTAL SQUARE FEET OF PLANTED AND IRRIGATED AREA. ENTER THIS NUMBER IN THE PLANT WATER USE TABLE ON THIS SHEET.
- IF NEEDED USE A RED PEN TO ADJUST THE LAYOUT OF DRIVEWAY, PATHS AND PLANTING AREAS TO FIT YOUR YARD.
- ADJUST ORIENTATION OF NORTH ARROW TO SITE CONDITION.
- ADD ANY EXISTING TREES IN RED ON THE PLAN. ADJUST TREE LOCATIONS IF NEEDED TO FIT YOUR SITE.
- FILL IN PLANT WATER USE TABLE.
- INSURE LESS THAN 25% OF PLANTED AREA IS MEDIUM WATER USE PLANTINGS.
- IN THE LEGEND, CIRCLE THE HARDSCAPE MATERIALS YOU WILL BE USING AND ON DETAIL SHEETS L3.0, L3.1 & L3.2.
- INDICATE ANY SUBSTITUTIONS TO THE PLANTINGS BY CROSSING OUT THE LISTED PLANTS AND WRITING THE SUBSTITUTION BELOW IN RED INK. MAKE SURE THE PLANTS USED HAVE MATCHING WATER USE AND ARE ROUGHLY THE SAME SIZE (SEE SONOMA-MARIN SAVING WATER PARTNERSHIP <http://www.savingwaterpartnership.org> FOR SUBSTITUTIONS).
- MOVE TO THE IRRIGATION PLAN AND FILL IN THE AREAS INDICATED ON THAT SHEET.

**NOTE:**

- PLANTING DESIGN FOR FULL COVER WITHIN 3 YEARS.
- THE GARDEN IS DESIGNED TO CAPTURE AND INFILTRATE SOME STORM WATER ON SITE. WHEN THE FLOW IS DIRECTED TO A SWALE OR RAIN GARDEN, IT NEEDS AN OVERFLOW OUTLET THAT WON'T ERODE. OPTIONS ARE PROVIDED ON THE DETAIL SHEETS. SPLASHBLOCKS AND OUTLETS IN PLANTING BEDS ARE MEANT TO SPREAD THE FLOW TO SHEETFLOW OVER PLANTING AREAS AND NO OVERFLOW DEVICE IS NEEDED.
- REVIEW IRRIGATION SHEETS AND INSTALL SLEEVES UNDER PAVING SURFACES IN THEIR CORRECT LOCATION.

WATER USE	PLAN SF (%)	PERMIT SF (FILL IN)	PERMIT % (FILL IN)
LOW	857 (79%)		
MED	229 (21%)		
TOTAL	1,086 (100%)		

BY USING THESE PLANS I AGREE TO OBTAIN, INDENTIFY AND HOLD HARMLESS THE SONOMA-MARIN SAVING WATER PARTNERSHIP, ITS MEMBERS SONOMA COUNTY WATER AGENCY, CITY OF SAN RAFAEL, MARIN COUNTY WATER AGENCY, CITY OF PETALUMA, CITY OF COALITA, CITY OF SONOMA, VALLEY OF THE MOON WATER DISTRICT AND TOWN OF WINDSOR AND THEIR DIRECTORS, OFFICERS, AGENTS, EMPLOYEES AND ASSOCIATED DESIGN CONSULTANTS AND ADVISORS FROM THE USE OF THESE PLANS AND ANY DAMAGES, INCLUDING ATTORNEY'S FEES, ARISING OUT OF OR RESULTING FROM THE USE OF THESE PLANS. I UNDERSTAND THAT IT IS MY RESPONSIBILITY AS THE PROJECT OWNER TO ENSURE THAT PLANS COMPLY WITH ALL APPLICABLE REGULATIONS, ORDINANCES AND/OR

SONOMA-MARIN SAVING WATER PARTNERSHIP, ITS MEMBERS AND LANDSCAPE DESIGN CONSULTANTS MAKE NO WARRANTY, EITHER IN FACT OR OTHERWISE, OR ANY STATUTE OR OTHERWISE, AND SONOMA-MARIN SAVING WATER PARTNERSHIP, ITS MEMBERS AND LANDSCAPE DESIGN CONSULTANTS EACH SPECIFICALLY DISCLAIM ANY OTHER WARRANTIES, WHETHER WRITTEN OR ORAL, OR EXPRESS OR IMPLIED, INCLUDING ANY WARRANTY OF QUALITY. INDENTIFICATION OF OWNERSHIP FOR THE QUALITY OF ANY PATENTS OR THE NON-INFRINGEMENT OF ANY INTELLECTUAL PROPERTY RIGHTS OF THIRD PARTIES.

**ABLA**  
ANN BAKER LANDSCAPE ARCHITECTURE  
625 2ND ST., STE 110  
PETALUMA, CA 94952  
TEL: (707) 772-5062  
EMAIL: landarches@gmail.com

**daily acts**  
because every choice matters

**ForeSite**  
digital mapping solutions

**Equinox**  
LANDSCAPE

**SHERWOOD**  
DESIGN ENGINEERS

**P D G**  
PANORAMIC DESIGN GROUP  
LANDSCAPE ARCHITECTURE

RESIDENTIAL LANDSCAPE DESIGN TEMPLATE  
SONOMA-MARIN SAVING WATER PARTNERSHIP  
[www.savingwaterpartnership.org](http://www.savingwaterpartnership.org)

NAME: \_\_\_\_\_  
SITE ADDRESS: \_\_\_\_\_

SONOMA-MARIN SAVING WATER PARTNERSHIP

SHEET TITLE:  
LAYOUT &  
PLANTING PLAN  
NATIVE  
ADAPTIVE A

DATE:  
PERMIT PLAN  
APRIL 2, 2019

**L-1.0**

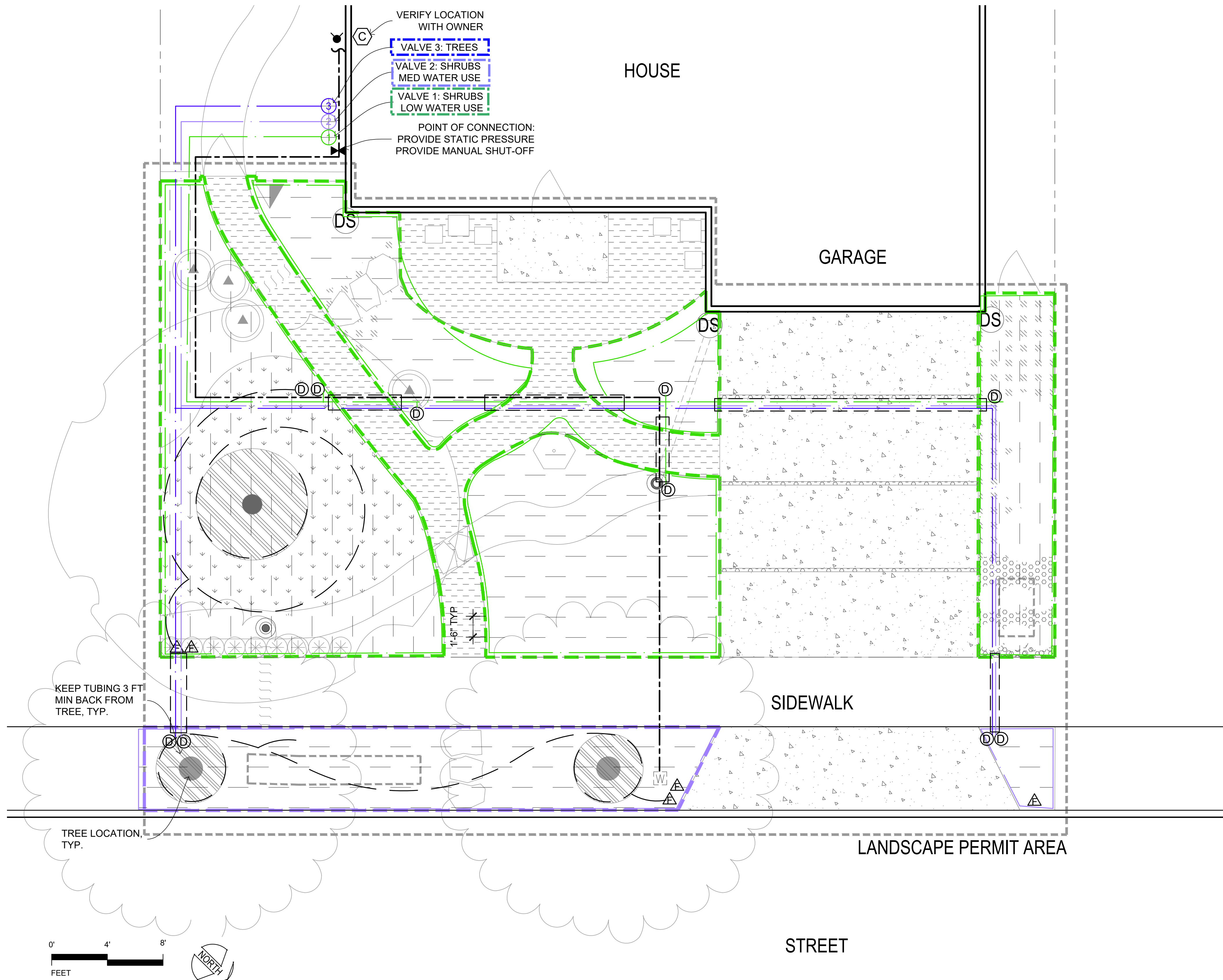
SHEET  
OF

**IRRIGATION LEGEND**

APPLICANT CHECK-OFF COMPONENTS	SYMBOL	COMPONENT	MANUFAC - TURER	MODEL	NOTES / SIZE / COLOR
	W	EXISTING WATER METER			
	C	CONTROLLER	HUNTER	PRO-C	INDOOR
	☼	WEATHER SENSOR	HUNTER	SOLAR-SYNC -SEN	WIRED
	⊗	FULL PORT BALL VALVE	NIBCO	585	LINE SIZE
	[ - - - ]	SLEEVE		PVC SCH 40	
	- - -	MAINLINE		PVC SCH 40 WITH SCH 40 SOLVENT WELD FITTINGS	
	---	LATERAL PIPE (COLOR VARIES PER ZONE)		PVC SCH 40 WITH SCH 40 SOLVENT WELD FITTINGS	PIPE SIZE: 0-6 GPM: 3/4" PIPE; 7-12 GPM: 1" PIPE;
		DRIP IRRIGATION CONTROL VALVE ASSEMBLY TO INCLUDE:			
		ASSEMBLY		ACZ-075-40 DRIP CONTROL ZONE KIT	ALL-IN-ONE KIT INCLUDES BACKFLOW PREVENTION, FILTER AND PRESSURE REGULATOR
	⊕	ANTI-SIPHON VALVE (COLOR VARIES PER ZONE)	HUNTER	PGV-ASV, INCLUDED IN KIT	3/4 INCH ANTI-SIPHON VALVE PROVIDES BACKFLOW PREVENTION
		DRIP FILTER		INCLUDED IN KIT	150 MESH STAINLESS STEEL SCREEN
		PRESSURE REGULATION		INCLUDED IN KIT	40 PSI
		NIPPLE			PVC SCH 80 UV RESISTANT
	Ⓧ	TRANSITION TO DRIP ZONE			SEE DETAIL
		DRIP LAYOUT			
	[ - - - ]	PLANTING BEDS			
	( )	TREES	NETAFIM TLCV6-1201 EMITTER FLOW 0.6 GPH; EMITTER SPACING: 12".		
		INLINE EMITTER TUBING	NETAFIM	TLCV4-1801	<b>CLAY SOIL:</b> EMITTER FLOW: 0.4 GPH; EMITTER SPACING: 18"; ROW SPACING: 18"
				TLCV4-1801	<b>LOAM SOIL:</b> EMITTER FLOW: 0.4 GPH; EMITTER SPACING: 18"; ROW SPACING: 18"
				TLCV6-1201	<b>SANDY SOIL:</b> EMITTER FLOW: 0.6 GPH; EMITTER SPACING: 12"; ROW SPACING: 18"
	△	DRIP FLUSHOUT	NETAFIM	TLFIG8	
		SYMBOLS FOR COMPONENTS ARE LARGER THAN ACTUAL SIZE AND MAY BE SHOWN IN PAVED AREAS FOR GRAPHIC CLARITY. COORDINATE LOCATION OF EQUIPMENT WITH PLUMBER.			
		ALL PIPE RUNS UNDER PAVING ARE IN SLEEVES, INSTALL SLEEVES PRIOR TO POURING CONCRETE			

**APPLICANT INSTRUCTIONS:**

- ADJUST LAYOUT OF PLANTING BEDS IF CHANGED ON LAYOUT SHEET 1.0.
- REVIEW IRRIGATION VALVE TABLE TO ADJUST SF AREAS OF VALVE ZONES.
- IF AREAS EXCEED MAX SUBZONE FLOW (3 GPM) DIVIDE INTO ADDITIONAL SUBZONES AND ENTER UNDER SUBZONE COLUMN
- IF AREAS EXCEED MAX ZONE FLOW (7 GPM) ADD A VALVE AND ENTER SF AREA NEXT TO NEW VALVE NUMBER ("B" OR "C")
- DRAW OUT NEW SUBZONE AND/OR VALVE ZONE AREA ON PLAN IN NEW COLOR.
- ADD VALVE AS NEEDED TO VALVE MANIFOLD.
- REVIEW IRRIGATION LEGEND AND CHECK OFF THAT ALL COMPONENTS ARE SHOWN ON ADJUSTED PLAN.
- NOTE ANY EQUIPMENT SUBSTITUTIONS.



WATER USE	PLAN SF (%)	PERMIT SF (FILL IN)	PERMIT % (FILL IN)
LOW	857 (79%)		
MED	229 (21%)		
TOTAL	1,086 (100%)		

**IRRIGATION VALVE TABLE**

HYDRO ZONE	WATER USE	VALVE	PLAN SF	SUB - ZONES	PERMIT SF (FILL IN)	SUB - ZONES (FILL IN)	SOIL TYPE (CLAY / LOAM / SAND) (FILL IN)
1	LOW	1	857 SF	5			
2	MED	2	229 SF	2			
3	TREES	3	126 LF	2			

CLAY SOIL: DO NOT EXCEED 1100 SF / 3 GPM PER SUBZONE. IF TOTAL AREA OF ZONE EXCEEDS 2200 SF, ADD A VALVE.  
 LOAM SOIL: DO NOT EXCEED 1100 SF / 3 GPM PER SUBZONE. IF TOTAL AREA OF ZONE EXCEEDS 2200 SF, ADD A VALVE.  
 SANDY SOIL: DO NOT EXCEED 500 SF / 3 GPM PER SUBZONE. IF TOTAL AREA OF ZONE EXCEEDS 1000 SF, ADD A VALVE.  
 TREE EMITTER TUBING 0.6 GPH PER LEGEND: MIN 20 LF PER VALVE; MAX 200 LF PER SUBZONE; MAX 400 LF PER VALVE  
 FOR EMITTER FLOW, EMITTER SPACING & ROW SPACING PER SOIL TYPE SEE LEGEND

BY USING THESE PLANS, I AGREE TO DEFEND, INDEMNIFY, AND HOLD HARMLESS THE SONOMA-MARIN SAVING WATER PARTNERSHIP, ITS MEMBERS (SONOMA COUNTY WATER AGENCY, CITY OF SANTA ROSA, MARIN COUNTY WATER AGENCY, CITY OF SAN RAFAEL, MARIN COUNTY WATER DISTRICT, NORTH MARIN WATER DISTRICT, CITY OF ROBINHART PARK, CITY OF PETALUMA, CITY OF COSTA, CITY OF SONOMA VALLEY, THE MICHIGAN DISTRICT AND TOWN OF WANDERER) AND THEIR DIRECTORS, OFFICERS, AGENTS, EMPLOYEES AND LANDSCAPE DESIGN MEMBERS AND LANDSCAPE DESIGN CONSULTANTS MAKE NO REPRESENTATION AND GRANT NO WARRANTIES, EXPRESS OR IMPLIED, EITHER IN FACT OR BY OPERATION OF LAW, BY STATE OR OTHERWISE, AND SONOMA-MARIN SAVING WATER PARTNERSHIP, ITS MEMBERS AND DESIGN CONSULTANTS EACH SPECIFICALLY DISCLAIM ANY OTHER WARRANTIES, WHETHER WRITTEN OR ORAL, EXPRESS OR IMPLIED, INCLUDING ANY WARRANTY OF QUALITY, MERCHANTABILITY, OR FITNESS FOR A PARTICULAR USE, OR PURPOSE OR ANY WARRANTY AS TO THE VALIDITY OF ANY PATENTS OR THE REQUIREMENT OF ANY REGULATIONS, ORDINANCES AND/OR CODES.

**ABLA**  
 ANN BAKER LANDSCAPE ARCHITECTURE  
 625 2ND ST., STE 110  
 PETALUMA, CA 94952  
 TEL: (707) 772-5062  
 EMAIL: landarches@gmail.com

**daily acts**  
 because every choice matters

**ForeSite**  
 digital mapping solutions

**Equinox**  
 LANDSCAPE

**SHERWOOD**  
 DESIGN ENGINEERS

**P D G**  
 PANORAMIC DESIGN GROUP  
 LANDSCAPE ARCHITECTURE

RESIDENTIAL LANDSCAPE DESIGN TEMPLATE  
 SONOMA-MARIN SAVING WATER PARTNERSHIP  
 www.savingwaterpartnership.org  
 NAME: \_\_\_\_\_  
 SITE ADDRESS: \_\_\_\_\_

**SONOMA-MARIN SAVING WATER PARTNERSHIP**

SHEET TITLE:  
 IRRIGATION PLAN  
 NATIVE ADAPTIVE A

DATE:  
 PERMIT PLAN  
 JANUARY 17, 2019

**L-2.0**

SHEET OF