

- APPLICANT INSTRUCTIONS:**
- MEASURE ENTIRE FRONT YARD AREA. SUBTRACT HARDSCAPE AREAS TO GET THE TOTAL SQUARE FEET OF PLANTED AND IRRIGATED AREA. ENTER THIS NUMBER IN THE PLANT WATER USE TABLE ON THIS SHEET.
 - IF NEEDED USE A RED PEN TO ADJUST THE LAYOUT OF DRIVEWAY, PATHS AND PLANTING AREAS TO FIT YOUR YARD.
 - ADJUST ORIENTATION OF NORTH ARROW TO SITE CONDITION.
 - ADD ANY EXISTING TREES IN RED ON THE PLAN. ADJUST TREE LOCATIONS IF NEEDED TO FIT YOUR SITE.
 - FILL IN PLANT WATER USE TABLE.
 - INSURE LESS THAN 25% OF PLANTED AREA IS MEDIUM WATER USE PLANTINGS.
 - IN THE LEGEND, CIRCLE THE HARDSCAPE MATERIALS YOU WILL BE USING AND ON DETAIL SHEETS L3.0, L3.1 & L3.2.
 - INDICATE ANY SUBSTITUTIONS TO THE PLANTINGS BY CROSSING OUT THE LISTED PLANTS AND WRITING THE SUBSTITUTION BELOW IN RED INK. MAKE SURE THE PLANTS USED HAVE MATCHING WATER USE AND ARE ROUGHLY THE SAME SIZE (SEE SONOMA-MARIN SAVING WATER PARTNERSHIP <http://www.savingwaterpartnership.org> FOR SUBSTITUTIONS).
 - MOVE TO THE IRRIGATION PLAN AND FILL IN THE AREAS INDICATED ON THAT SHEET.
- NOTE:**
- PLANTING DESIGN FOR FULL COVER WITHIN 3 YEARS.
 - THE GARDEN IS DESIGNED TO CAPTURE AND INFILTRATE SOME STORM WATER ON SITE. WHEN THE FLOW IS DIRECTED TO A SWALE OR RAIN GARDEN, IT NEEDS AN OVERFLOW OUTLET THAT WON'T ERODE. OPTIONS ARE PROVIDED ON THE DETAIL SHEETS. SPLASHBLOCKS AND OUTLETS IN PLANTING BEDS ARE MEANT TO SPREAD THE FLOW TO SHEETFLOW OVER PLANTING AREAS AND NO OVERFLOW DEVICE IS NEEDED.
 - REVIEW IRRIGATION SHEETS AND INSTALL SLEEVES UNDER PAVING SURFACES IN THEIR CORRECT LOCATION.

WATER USE	PLAN SF (%)	PERMIT SF (FILL IN)	PERMIT % (FILL IN)
LOW	2,165 (94%)		
MED	137 (6%)		
TOTAL	2,302 (100%)		

OPTIONAL MATERIALS LEGEND

	UNITS	PLAN QUANTITY	PERMIT QUANTITY (FILL IN)
VEHICULAR PAVING			
STABILIZED AGGREGATE SEE DETAIL 10 ON SHEET L3.0	SF	325	
PEDESTRIAN PAVING			
AGGREGATE PAVING, CHOOSE FROM DETAILS 1-5 ON SHEET L3.0	SF	160	
CONCRETE	SF	146	
MULCH SEE DETAIL 5 ON SHEET L3.2	SF		
STORM WATER ELEMENTS (OPTIONAL)			
COBBLE SEE DETAIL 4 ON SHEET L3.1	SF	16	
STORM DRAINAGE ACROSS/UNDER PATH, CHOOSE FROM DETAIL 5-7 ON SHEET L3.1	EA	1	
STORM DRAIN PIPE SEE DETAIL 2 ON SHEET L3.1	LF	36	

*SEE SHEETS L3.0-3.2 FOR MATERIALS OPTIONS

PLANTING LEGEND

AREA	BOTANICAL NAME	SIZE	SPACING	PLAN QUANTITY	PERMIT QUANTITY (FILL IN)
------	----------------	------	---------	---------------	---------------------------

PLANTING LOW WATER USE

	MEDIUM TREE PRUNUS SALICINA 'SANTA ROSA' (SANTA ROSA PLUM)	15G	20-40' O.C.	1	
	LARGE TREE TILIA TOMENTOSA (SILVER LINDEN) ULMUS PARVIFOLIA (CHINESE ELM) QUERCUS X MOREHUS (ORACLE OAK)	15G	30-50' O.C.	3	
	LARGE SHRUB/SMALL TREE CEANOTHUS 'RAY HARTMAN' STD	5G	10-12' O.C.	1	
	LARGE EDIBLE SHRUB PRUNUS ARMEINIACA (DWARF APRICOT) PRUNUS DOMESTICA (DWARF PLUM) PRUNUS PERSICA (DWARF PEACH) SAMBUCUS EBULLUS (DWARF ELDERBERRY)	5G	10-15' O.C.	3	

GROUND COVER

	MONARDELLA VILLOSA (COYOTE MINT)	4"	2' O.C.	27	
--	----------------------------------	----	---------	----	--

SHRUBS 1-3' SUN

	FRANGULA CALIFORNICA 'SEAVIEW IMPROVED' (COFFEEBERRY)	1G	3' O.C.	4	
--	--	----	---------	---	--

GROUND COVER

	SATUREJA DOUGLASSII (YERBA BUENA)	4"	18" O.C.	40	
--	-----------------------------------	----	----------	----	--

ORNAMENTAL GRASSES

	KOELERIA MACRANTHA (NATIVE JUNE GRASS) *SEED WITH NATIVE WILDFLOWERS. SEE MASTER PLANT LIST FOR OPTIONS. http://www.savingwaterpartnership.org .	2" PLUGS	18"-24" O.C.	200-250	
	CYNARA CARDUNCULUS	1G	4' O.C.	3	
	MUHLENBERGIA DUBIA (PINE MULEY GRASS) *SEED WITH NATIVE WILDFLOWERS BETWEEN GRASSES. SEE MASTER PLANT LIST FOR OPTIONS. http://www.savingwaterpartnership.org .	1G	3' O.C.	16	

PERENNIALS 2-4' SUN

	CEANOTHUS 'CENTENNIAL' (CENTENNIAL CEANOTHUS)	1G	5' O.C.	3	
	ARCTOSTAPHYLOS EDMUNDII 'ROSIE DAWN' (MANZANITA)	1G	4' O.C.	6	

SHRUBS 1-3' SUN

	ARCTOSTAPHYLOS 'SUNSET' (MANZANITA)	1G	5' O.C.	1	
	CISTUS 'LITTLE MISS SUNSHINE'	1G	3' O.C.	4	
	LAVENDULA INTERMEDIA (FRENCH LAVENDER)	1G	5' O.C.	8	
	SOLLYA HETEROPHYLLA (AUSTRALIAN BLUEBELL CREEPER)	1G	3' O.C.	13	

SHRUBS 3-6' SUN

	TRICHOSTEMA 'MIDNIGHT MAGIC' (HYBRID BLUE CURLS)	1G	3' O.C.	2	
--	--	----	---------	---	--

VINE PLANTING

	KIWI VINE	5G		1	
--	-----------	----	--	---	--

RAIN GARDEN (OPTIONAL)

	RAIN GARDEN: 3/8" GRAVEL MULCH OR PEA GRAVEL, SEE L3.1 FOR DETAILS *CAREX TUMULICOLA (50%) (PLANTED CLOSE TO TREES) *JUNCUS PATENS (25%) *SYNSCHIMUM BELLUM (25%)	2" PLUGS	3' O.C.	71	
		2" PLUGS	3' O.C.	36	
		2" PLUGS	2' O.C.	53	

PLANTING MEDIUM WATER USE

	FRAGARIA X ANANASSA (STRAWBERRY 'TRISTAR')	4"		24	
	LEUCANTHEMUM X SUPERBUM (SHASTA DAISY)	4"		4	
	ALSTROEMERIA SPP. (PERUVIAN LILY)	4"		6	
	COSMOS BIPINNATUS (COSMOS)	4"		4	
	ECHINACEA PURPUREA (PURPLE CONEFLOWER)	4"		8	
	PAPAYER ORIENTALE (ORIENTAL POPPY)	SEED		4"	
	COREOPSIS SPP. (TICKSEED)	4"		8	
	HELIANTHUS/RUDEBECKIA (SUNFLOWER/BLACK EYED SUSAN)	4"		8	

*SEE MASTER PLANT LIST FOR PLANT SUBSTITUTIONS AND SHADE ALTERNATES, AVAILABLE FROM SONOMA-MARIN SAVING WATER PARTNERSHIP <http://www.savingwaterpartnership.org>.

PLANTING NOTES:

- REFER TO PLANTING DETAILS ON SHEET L3.2.

BY USING THESE PLANS, I AGREE TO DEFEND, INDEMNIFY AND HOLD HARMLESS THE SONOMA-MARIN SAVING WATER PARTNERSHIP, ITS MEMBERS, DIRECTORS, OFFICERS, AGENTS, EMPLOYEES AND LANDSCAPE DESIGN CONSULTANTS AGAINST ALL DAMAGES, INCLUDING ATTORNEY'S FEES, ARISING OUT OF OR RESULTING FROM THE USE OF THESE PLANS. I UNDERSTAND THAT IT IS MY RESPONSIBILITY AS THE PROJECT OWNER TO ENSURE THAT ALL ELEMENTS ARE PERMITTED SAFELY AND ACCORDING TO APPLICABLE STATE, FEDERAL AND LOCAL REGULATIONS AND ORDINANCES.

ABLA
ANN BAKER LANDSCAPE ARCHITECTURE
625 2ND ST., STE. 110
PETALUMA, CA 94952
TEL.: (707) 772-5062
EMAIL: landarches@gmail.com

daily acts
because every choice matters

ForeSite
digital mapping solutions

Equinox
LANDSCAPE

SHERWOOD
DESIGN ENGINEERS

P D G
PANORAMIC DESIGN GROUP
LANDSCAPE ARCHITECTURE

RESIDENTIAL LANDSCAPE DESIGN TEMPLATE
SONOMA-MARIN SAVING WATER PARTNERSHIP
www.savingwaterpartnership.org

NAME: _____
SITE ADDRESS: _____

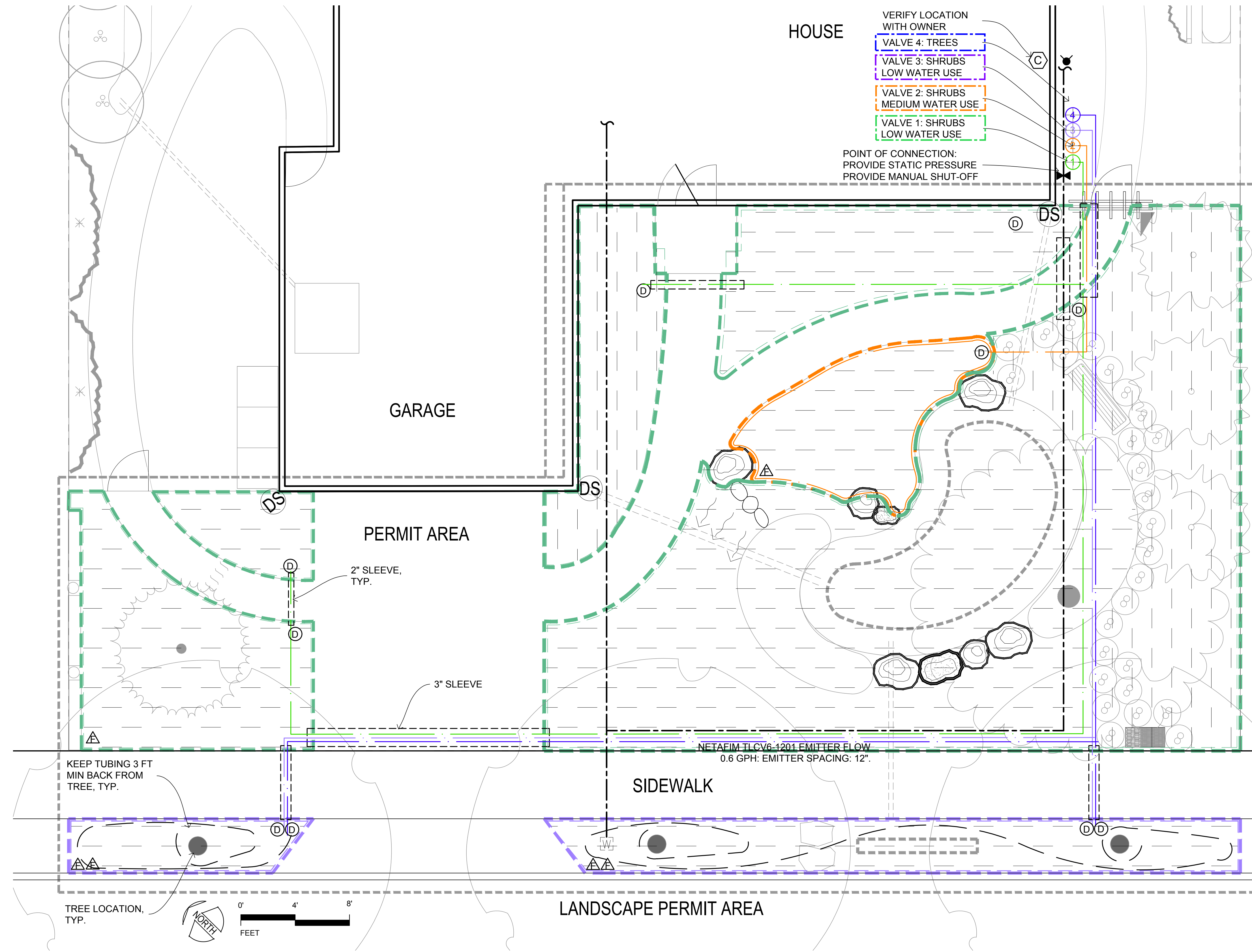
SONOMA-MARIN SAVING WATER PARTNERSHIP

SHEET TITLE:
LAYOUT & PLANTING PLAN
ECO EDIBLE B

DATE:
PERMIT PLAN
APRIL 2, 2019

L-1.0

SHEET OF



WATER USE	PLAN SF (%)	PERMIT SF (FILL IN)	PERMIT % (FILL IN)
LOW	2,165 (94%)		
MED	137 (6%)		
TOTAL	2,302 (100%)		

IRRIGATION VALVE TABLE

HYDRO ZONE	WATER USE	VALVE	PLAN SF	SUB-ZONES	PERMIT SF (FILL IN)	SUB-ZONES (FILL IN)	SOIL TYPE (CLAY / LOAM / SAND) (FILL IN)
1	LOW	1	1888 SF	5			
2	MED	2	137 SF	1			
3	LOW	3	277 SF	2			
4	TREES	4	130 LF	2			

CLAY SOIL: DO NOT EXCEED 1100 SF / 3 GPM PER SUBZONE. IF TOTAL AREA OF ZONE EXCEEDS 2200 SF, ADD A VALVE.
 LOAM SOIL: DO NOT EXCEED 1100 SF / 3 GPM PER SUBZONE. IF TOTAL AREA OF ZONE EXCEEDS 2200 SF, ADD A VALVE.
 SANDY SOIL: DO NOT EXCEED 500 SF / 3 GPM PER SUBZONE. IF TOTAL AREA OF ZONE EXCEEDS 1000 SF, ADD A VALVE.
 TREE EMITTER TUBING 0.6 GPH PER LEGEND: MIN 20 LF PER VALVE; MAX 200 LF PER SUBZONE; MAX 400 LF PER VALVE FOR EMITTER FLOW, EMITTER SPACING & ROW SPACING PER SOIL TYPE SEE LEGEND

IRRIGATION LEGEND

APPLICANT CHECK-OFF COMPONENTS	SYMBOL	COMPONENT	MANUFAC - TURER	MODEL	NOTES / SIZE / COLOR
		EXISTING WATER METER			
		CONTROLLER	HUNTER	PRO-C	INDOOR
		WEATHER SENSOR	HUNTER	SOLAR-SYNC -SEN	WIRED
		FULL PORT BALL VALVE	NIBCO	585	LINE SIZE
		SLEEVE		PVC SCH 40	
		MAINLINE		PVC SCH 40 WITH SCH 40 SOLVENT WELD FITTINGS	
		LATERAL PIPE (COLOR VARIES PER ZONE)		PVC SCH 40 WITH SCH 40 SOLVENT WELD FITTINGS	PIPE SIZE: 0-6 GPM: 3/4" PIPE; 7-12 GPM: 1" PIPE;
		DRIP IRRIGATION CONTROL VALVE ASSEMBLY TO INCLUDE:			
		ASSEMBLY		ACZ-075-40 DRIP CONTROL ZONE KIT	ALL-IN-ONE KIT INCLUDES BACKFLOW PREVENTION, FILTER AND PRESSURE REGULATOR
		ANTI-SIPHON VALVE (COLOR VARIES PER ZONE)	HUNTER	PGV-ASV, INCLUDED IN KIT	3/4 INCH ANTI-SIPHON VALVE PROVIDES BACKFLOW PREVENTION
		DRIP FILTER		INCLUDED IN KIT	150 MESH STAINLESS STEEL SCREEN
		PRESSURE REGULATION		INCLUDED IN KIT	40 PSI
		NIPPLE			PVC SCH 80 UV RESISTANT
		TRANSITION TO DRIP ZONE			SEE DETAIL
		DRIP LAYOUT			
		PLANTING BEDS			
		TREES			NETAFIM TLCV6-1201 EMITTER FLOW 0.6 GPH; EMITTER SPACING: 12"
		INLINE EMITTER TUBING	NETAFIM	TLCV4-1801	CLAY SOIL: EMITTER FLOW: 0.4 GPH; EMITTER SPACING: 18"; ROW SPACING: 18" LOAM SOIL: EMITTER FLOW: 0.4 GPH; EMITTER SPACING: 18"; ROW SPACING: 18"
				TLCV6-1201	SANDY SOIL: EMITTER FLOW: 0.6 GPH; EMITTER SPACING: 12"; ROW SPACING: 18"
		DRIP FLUSHOUT	NETAFIM	TLFIG8	
		SYMBOLS FOR COMPONENTS ARE LARGER THAN ACTUAL SIZE AND MAY BE SHOWN IN PAVED AREAS FOR GRAPHIC CLARITY. COORDINATE LOCATION OF EQUIPMENT WITH PLUMBER.			
		ALL PIPE RUNS UNDER PAVING ARE IN SLEEVES, INSTALL SLEEVES PRIOR TO POURING CONCRETE			

APPLICANT INSTRUCTIONS:

- ADJUST LAYOUT OF PLANTING BEDS IF CHANGED ON LAYOUT SHEET 1.0.
- REVIEW IRRIGATION VALVE TABLE TO ADJUST SF AREAS OF VALVE ZONES.
- IF AREAS EXCEED MAX SUBZONE FLOW (3 GPM) DIVIDE INTO ADDITIONAL SUBZONES AND ENTER UNDER SUBZONE COLUMN
- IF AREAS EXCEED MAX ZONE FLOW (7 GPM) ADD A VALVE AND ENTER SF AREA NEXT TO NEW VALVE NUMBER ("B" OR "C")
- DRAW OUT NEW SUBZONE AND/OR VALVE ZONE AREA ON PLAN IN NEW COLOR.
- ADD VALVE AS NEEDED TO VALVE MANIFOLD.
- REVIEW IRRIGATION LEGEND AND CHECK OFF THAT ALL COMPONENTS ARE SHOWN ON ADJUSTED PLAN.
- NOTE ANY EQUIPMENT SUBSTITUTIONS.

BY USING THESE PLANS, I AGREE TO DEFEND, INDEMNIFY AND HOLD HARMLESS THE SONOMA-MARIN WATER PARTNERSHIP, ITS MEMBER, SONOMA COUNTY WATER AGENCY, CITY OF SANTA ROSA, MARIN MUNICIPAL WATER DISTRICT, SONOMA COUNTY WATER DISTRICT, CITY OF REDWOOD CITY, CITY OF PETALUMA, CITY OF OROVILLE, CITY OF SONOMA, VALLEY OF THE MOON WATER DISTRICT AND TOWN OF WINDSOR AND THEIR DIRECTORS, OFFICERS, AGENTS, EMPLOYEES AND LANDSCAPE DESIGN PARTNERSHIP FROM AND AGAINST ALL LIABILITY, DAMAGES, LOSSES, COSTS AND EXPENSES, CLAIMS, SUITS AND DAMAGES, INCLUDING ATTORNEY'S FEES, ARISING OUT OF OR FROM THE USE OF THESE PLANS. I UNDERSTAND THAT IT IS MY RESPONSIBILITY AS THE PROJECT OWNER TO OBTAIN ALL NECESSARY PERMITS AND TO OBTAIN ALL NECESSARY INSURANCE COVERAGE. I AGREE TO HOLD THE SONOMA-MARIN WATER PARTNERSHIP, ITS MEMBER AND LANDSCAPE DESIGN PARTNERSHIP HARMLESS FROM AND AGAINST ALL LIABILITY, DAMAGES, LOSSES, COSTS AND EXPENSES, CLAIMS, SUITS AND DAMAGES, INCLUDING ATTORNEY'S FEES, ARISING OUT OF OR FROM THE USE OF THESE PLANS. I UNDERSTAND THAT IT IS MY RESPONSIBILITY AS THE PROJECT OWNER TO OBTAIN ALL NECESSARY PERMITS AND TO OBTAIN ALL NECESSARY INSURANCE COVERAGE.

ABLA
ANN BAKER LANDSCAPE ARCHITECTURE
625 2ND ST., STE 110
PETALUMA, CA 94952
TEL: (707) 772-5062
EMAIL: landarches@gmail.com

daily acts
because every choice matters

ForeSite
digital mapping solutions

Equinox
LANDSCAPE

SHERWOOD
DESIGN ENGINEERS

P D G
PANORAMIC DESIGN GROUP
LANDSCAPE ARCHITECTURE

RESIDENTIAL LANDSCAPE DESIGN TEMPLATE
SONOMA-MARIN SAVING WATER PARTNERSHIP
www.savingwaterpartnership.org

NAME: _____
SITE ADDRESS: _____

SONOMA-MARIN SAVING WATER PARTNERSHIP

SHEET TITLE:
IRRIGATION PLAN
ECO EDIBLE B

DATE
PERMIT PLAN
APRIL 2, 2019

L-2.0

SHEET OF