

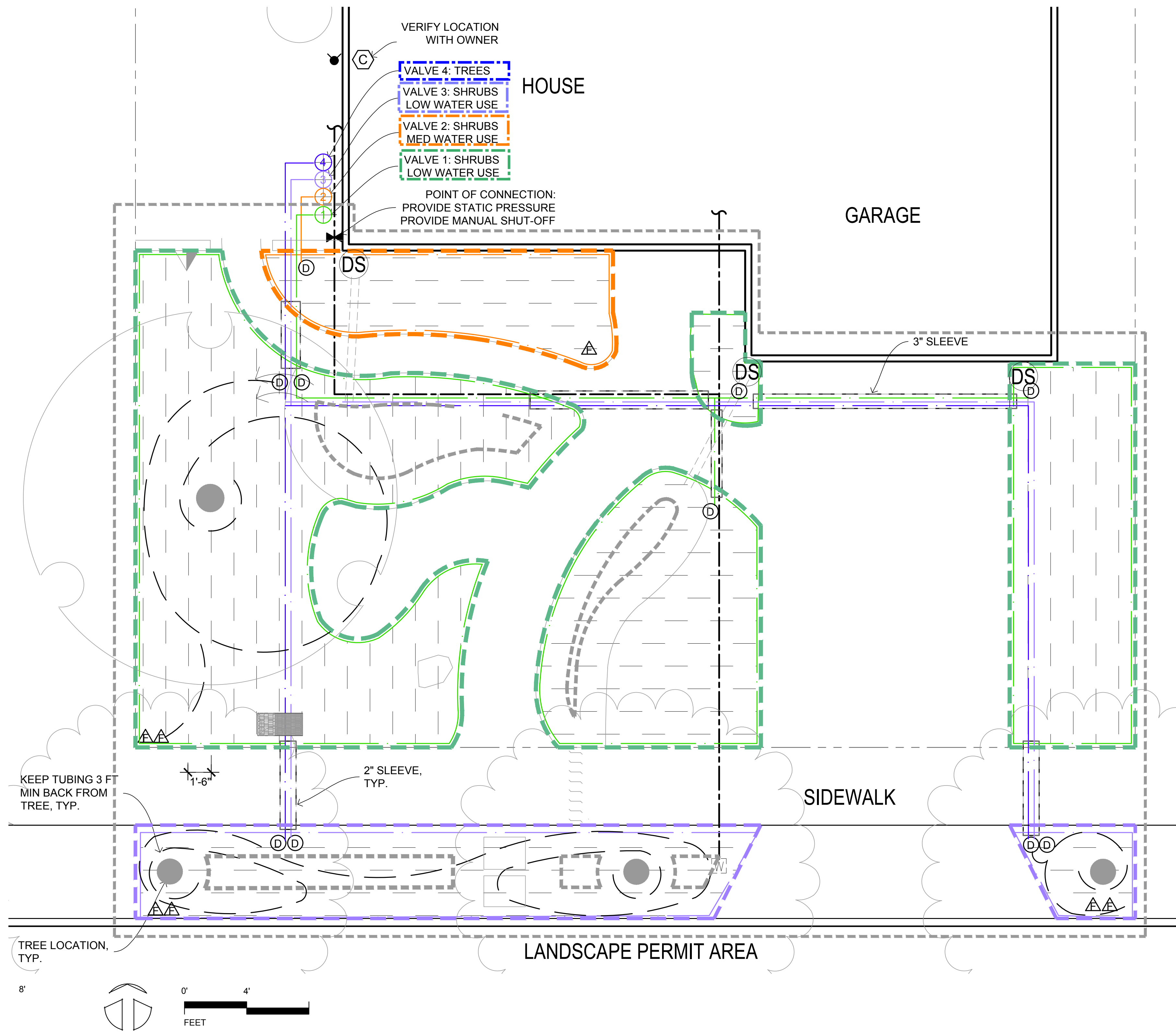


**IRRIGATION LEGEND**

APPLICANT CHECK-OFF COMPONENTS	SYMBOL	COMPONENT	MANUFAC - TURER	MODEL	NOTES / SIZE / COLOR
		EXISTING WATER METER			
		CONTROLLER	HUNTER	PRO-C	INDOOR
		WEATHER SENSOR	HUNTER	SOLAR-SYNC -SEN	WIRED
		FULL PORT BALL VALVE	NIBCO	585	LINE SIZE
		SLEEVE		PVC SCH 40	
		MAINLINE		PVC SCH 40 WITH SCH 40 SOLVENT WELD FITTINGS	
		LATERAL PIPE (COLOR VARIES PER ZONE)		PVC SCH 40 WITH SCH 40 SOLVENT WELD FITTINGS	PIPE SIZE: 0-6 GPM: 3/4" PIPE; 7-12 GPM: 1" PIPE;
		DRIP IRRIGATION CONTROL VALVE ASSEMBLY TO INCLUDE:			
		ASSEMBLY		ACZ-075-40 DRIP CONTROL ZONE KIT	ALL-IN-ONE KIT INCLUDES BACKFLOW PREVENTION, FILTER AND PRESSURE REGULATOR
		ANTI-SIPHON VALVE (COLOR VARIES PER ZONE)	HUNTER	PGV-ASV, INCLUDED IN KIT	3/4 INCH ANTI-SIPHON VALVE PROVIDES BACKFLOW PREVENTION
		DRIP FILTER		INCLUDED IN KIT	150 MESH STAINLESS STEEL SCREEN
		PRESSURE REGULATION		INCLUDED IN KIT	40 PSI
		NIPPLE			PVC SCH 80 UV RESISTANT
		TRANSITION TO DRIP ZONE			SEE DETAIL
		DRIP LAYOUT			
		PLANTING BEDS			
		TREES		NETAFIM TLCV6-1201 EMITTER FLOW 0.6 GPH; EMITTER SPACING: 12".	
		CLAY SOIL:		TLCV4-1801	EMITTER FLOW: 0.4 GPH; EMITTER SPACING: 18"; ROW SPACING: 18"
		LOAM SOIL:		TLCV4-1801	EMITTER FLOW: 0.4 GPH; EMITTER SPACING: 18"; ROW SPACING: 18"
		SANDY SOIL:		TLCV6-1201	EMITTER FLOW: 0.6 GPH; EMITTER SPACING: 12"; ROW SPACING: 18"
		DRIP FLUSHOUT	NETAFIM	TLFIG8	
	SYMBOLS FOR COMPONENTS ARE LARGER THAN ACTUAL SIZE AND MAY BE SHOWN IN PAVED AREAS FOR GRAPHIC CLARITY. COORDINATE LOCATION OF EQUIPMENT WITH PLUMBER.				
	ALL PIPE RUNS UNDER PAVING ARE IN SLEEVES, INSTALL SLEEVES PRIOR TO POURING CONCRETE				

**APPLICANT INSTRUCTIONS:**

- ADJUST LAYOUT OF PLANTING BEDS IF CHANGED ON LAYOUT SHEET 1.0.
- REVIEW IRRIGATION VALVE TABLE TO ADJUST SF AREAS OF VALVE ZONES.
- IF AREAS EXCEED MAX SUBZONE FLOW (3 GPM) DIVIDE INTO ADDITIONAL SUBZONES AND ENTER UNDER SUBZONE COLUMN
- IF AREAS EXCEED MAX ZONE FLOW (7 GPM) ADD A VALVE AND ENTER SF AREA NEXT TO NEW VALVE NUMBER ("B" OR "C")
- DRAW OUT NEW SUBZONE AND/OR VALVE ZONE AREA ON PLAN IN NEW COLOR.
- ADD VALVE AS NEEDED TO VALVE MANIFOLD.
- REVIEW IRRIGATION LEGEND AND CHECK OFF THAT ALL COMPONENTS ARE SHOWN ON ADJUSTED PLAN.
- NOTE ANY EQUIPMENT SUBSTITUTIONS.



WATER USE	PLAN SF (%)	PERMIT SF (FILL IN)	PERMIT % (FILL IN)
LOW	1273 (91%)		
MED	127 (9%)		
TOTAL	1,400 (100%)		

**IRRIGATION VALVE TABLE**

HYDRO ZONE	WATER USE	VALVE	PLAN SF	SUB - ZONES	PERMIT SF (FILL IN)	SUB - ZONES (FILL IN)	SOIL TYPE (CLAY / LOAM / SAND) (FILL IN)
1	LOW	1	984 SF	3			
2	MED	2	127 SF	1			
3	LOW	3	289 SF	2			
4	TREES	4	190 LF	3			

CLAY SOIL: DO NOT EXCEED 1100 SF / 3 GPM PER SUBZONE. IF TOTAL AREA OF ZONE EXCEEDS 2200 SF, ADD A VALVE.  
 LOAM SOIL: DO NOT EXCEED 1100 SF / 3 GPM PER SUBZONE. IF TOTAL AREA OF ZONE EXCEEDS 2200 SF, ADD A VALVE.  
 SANDY SOIL: DO NOT EXCEED 500 SF / 3 GPM PER SUBZONE. IF TOTAL AREA OF ZONE EXCEEDS 1000 SF, ADD A VALVE.  
 TREE EMITTER TUBING 0.6 GPH PER LEGEND: MIN 20 LF PER VALVE; MAX 200 LF PER SUBZONE; MAX 400 LF PER VALVE FOR EMITTER FLOW, EMITTER SPACING & ROW SPACING PER SOIL TYPE SEE LEGEND

BY USING THESE PLANS, I AGREE TO DEFEND, INDEMNIFY AND HOLD HARMLESS THE SONOMA-MARIN WATER SAVING PARTNERSHIP, ITS MEMBERS, SONOMA COUNTY WATER AGENCY, CITY OF SANTA ROSA, MARIN COUNTY WATER AGENCY, CITY OF SAN RAFAEL, MARIN REGIONAL WATER DISTRICT, SANTA ROSA DISTRICT, CITY OF ROSS, CITY OF REDWOOD CITY, CITY OF FETTERVILLE, CITY OF COVIL, CITY OF SONOMA, VALLEY OF THE MOON, REDWOOD AND TOWN OF WINDSOR AND THEIR DIRECTORS, OFFICERS, AGENTS, EMPLOYEES AND LANDSCAPE DESIGNERS.

**ABLA**  
 ANN BAKER LANDSCAPE ARCHITECTURE  
 625 2ND ST., STE 110  
 PETALUMA, CA 94952  
 TEL: (707) 772-5062  
 EMAIL: landarches@gmail.com

**daily acts**  
 because every choice matters

**ForeSite**  
 digital mapping solutions

**Equinox**  
 LANDSCAPE

**SHERWOOD**  
 DESIGN ENGINEERS

**P D G**  
 PANORAMIC DESIGN GROUP  
 LANDSCAPE ARCHITECTURE

RESIDENTIAL LANDSCAPE DESIGN TEMPLATE  
 SONOMA-MARIN SAVING WATER PARTNERSHIP  
 www.savingwaterpartnership.org  
 NAME: \_\_\_\_\_  
 SITE ADDRESS: \_\_\_\_\_

SONOMA-MARIN SAVING WATER PARTNERSHIP

SHEET TITLE:  
 IRRIGATION PLAN  
 ECO EDIBLE A

DATE  
 PERMIT PLAN  
 JANUARY 17, 2019

**L-2.0**

SHEET OF